

Types of Student Accommodation for: 🏠 EXCHANGE 2023-2024

*Apply
now!*



Student Accommodation Guide

This document will inform you about the different types of student accommodation available for exchange students. All rooms offered in this document are fully furnished. First, we give you some criteria to think about, such as facilities and locations. Secondly, we will provide you detailed information about each room type, such as rental prices, pictures and size.

HOUSING CORPORATIONS

VU Amsterdam works with several different housing corporations. These housing corporations offer various contracts and room types at several locations in Amsterdam.



Housing Corporation	Location / Building name	Av. Price*	One-time fee	Housing allowance
DUWO Short Stay	Uilenstede 4 until 16	€373,85	€208,50	Possible ≥ 18
	Uilenstede 174 until 222	€466,48	€208,50	Possible ≥ 18
	Eerste Ringdijkstraat	€841,83	€231	Possible ≥ 23
	De Boelelaan	€534,20	€208,50	No
Hotel Jansen	Schinkel	€895	€250	No
	Bajeskwartier	€1145	€250	No
The Social Hub	The Social Hub West	€1138	N/A	No

*Rent prices in the document are subject to change, new rental prices will be determined in May 2024. The rent increase follows the inflation standard and will be around 5% plus possible VAT increase. Please note, due to the energy crisis in Europe the expectation is that there will be an increase in the service costs! The current service costs are included in the average price.

BUDGET

The price of accommodation varies between €373,85 and €1145 per month. Utilities (water/ electricity/ internet) are included in the price. Choosing one of the cheaper options normally means you will have a room with shared facilities (kitchen and/or bathroom). A flexible attitude is desirable when sharing a bathroom and/or kitchen. The rooms in this document are subject to change.

HOUSING ALLOWANCE

Housing allowance (huurtoeslag) is a subsidy provided by the Dutch government to tenants with a low income and a relatively high cost of rent. Some of the student rooms we provide qualify for housing allowance. Find out more about which housing types are eligible on the following pages. For more general information about housing allowance and on the eligibility for this subsidy, please visit this [link](#).

STATE OF THE BUILDING

If you prefer a modern, clean and relatively new building, we advise you to choose accommodation at other locations than Uilenstede. For the buildings at Uilenstede it is important to note that most of them were built in the 1970s, although some of them have been renovated in recent years. In general, this location is suitable for students who are looking for budget accommodation.

FACILITIES

As a student in the Netherlands, it is very common to have your own bedroom while sharing your facilities (kitchen and/or bathroom). We have a wide range of options available in terms of shared/private facilities. Below you can find a quick overview:



Housing corp.	Room type	Bedroom	Bathroom	Kitchen
DUWO	Uilenstede 4 until 16	Private	Shared with 11 or 13 other students	Shared with 11 or 13 other students
	Uilenstede 174 until 222	Private	Private	Shared with 13 other students
	De Boelelaan	Private	Shared with 4 or 6 other students	Shared with 4 or 6 other students
	Eerste Ringdijkstraat	Private	Private	Private
The Social Hub	The Social Hub - West	Private	Private	Shared with 7 or 8 other students
Hotel Jansen	Schinkel	Private	Private	Shared with 25 other students
	Bajeskwartier	Private	Private	Shared with 25 other students

LOCATIONS

We have student accommodation available in different locations in Amsterdam. Although you might be dreaming of living in the city center with its canals and tall houses, you may wish to reconsider since it is mostly wealthy Dutch people or tourists staying there.

In contrast to the city center, Uilenstede is located in a very green area in between two parks and close to the Amsterdam forest. The Student Hub is located in the Western part of town. Eerste Ringdijkstraat is located in the East area of Amsterdam, and is considered to be more multicultural. Please note that De Boelelaan / Groningenstraat is located in a residential area and not suitable for parties. On the other hand, De Boelelaan / Groningenstraat is very close to the university campus of VU Amsterdam. Hotel Jansen offers designed hotels that have everything that is needed for a welcoming stay during your exchange.

On the map below you will find an overview of where these buildings are located in Amsterdam. In terms of logistics, please view the table below:



Distance to VU	Walk	Bike	Public transport
Uilenstede	20 min	7 min	10 min
De Boelelaan	8 min	4 min	x
Eerste Ringdijkstraat	60 min	20 min	26 min
The Social Hub - West	75 min	25 min	19 min
Hotel Jansen - Schinkel	30 min	10 min	23 min
Hotel Jansen - Bajeskwartier	67 min	21 min	26 min

Distance to city center	Walk	Bike	Public transport
Uilenstede	90 min	30 min	35 min
De Boelelaan	62 min	25 min	20 min
Eerste Ringdijkstraat	50 min	15 min	20 min
The Social Hub - West	55 min	18 min	25 min
Hotel Jansen - Schinkel	70 min	20 min	40 min
Hotel Jansen - Bajeskwartier	53 min	16 min	17 min

Map of Amsterdam



COUPLES ROOMS

We have very limited rooms available for couples. Most of the couples rooms are part of DUWO Accommodate and are located at Pierre Lallementstraat, Cornelis Lelylaan and Uilenstede. For more information about couples rooms and how to apply please have a look at the couple rooms brochure on our website or email studentaccommodation@vu.nl for more information.

HOW TO APPLY

In your personal dashboard on vu.nl, you can register for housing and complete your application by selecting your preferred budget category and paying the housing fee. Please note that the budget category you choose does not limit your booking options, as you may still be able to choose from different available categories.

Also, keep in mind that housing is in high demand and that the number of rooms available is limited. The International Office will do its utmost best to find suitable accommodation for everyone, but housing is not guaranteed for every student. We can also not guarantee housing at any specific location or within a specific budget category. We work with a first paid, first-served system, so the sooner you pay the housing fee, the more chances you will have in securing your preferred accommodation.

On the next pages, you can find an overview of the different types of accommodation with pictures, rental prices and sometimes a link to a video. Based on the criteria above, your priorities and the information on the following pages, you should be able to decide which room will meet your needs. In case you would like assistance with this, please send us an e-mail at studentaccommodation@vu.nl or schedule a phone call in our [online tool](#).

Housing Corporations & Room types

DUWO Short Stay.....	6
• Uilenstede 4 until 94	7
• Uilenstede 174 until 222	8
• De Boelelaan / Groningenstraat	9
• Eerste Ringdijkstraat.....	10
The Social Hub.....	11
Hotel Jansen Schinkel.....	12
Hotel Jansen Bajeskwartier.....	13

DUWO Short Stay

For many years the DUWO Foundation has been the provider of student rooms in Amsterdam, Delft, The Hague, Deventer, Haarlem, Leiden and Wageningen. With nearly 32,000 student rooms, DUWO is the largest student accommodation specialist in the Netherlands.

The following 9 pages will provide information about the various room types reserved at DUWO. The DUWO rooms have a **fixed rental period** of one semester or 1 year. Contracts cannot be shortened or extended.

ADMINISTRATIVE FEE & FIRST INSTALLMENT

Please note that for every room type you have to make a one-time administrative fee payment. This payment includes contract costs, cleaning service, bed linen and kitchen packages. Moreover, the first instalment for all accommodation types at DUWO consist of 3 months of rent (the first and last two months of your contract).

STANDARD INVENTORY

At least the below-mentioned items should be present in your room. The model of an item may differ from room to room.

ROOM

- Waste basket
- Wardrobe
- Bookcase
- Simple chair
- Desk lamp
- Small table
- Desk and office chair
- Window coverings
- Wi-Fi connection

BED

- 2 standard single beds + mattresses (90x200cm)
- pillows
- pillowcases
- duvets
- duvet covers with tuck-in strip
- fitted sheets
- moltons

TOILET/BATHROOM

- Toilet brush

KITCHEN

- Hot plate
- Garbage bin
- Refrigerator



UILENSTEDE 4 UNTIL 16

Rental Price

€357,03 - €390,67 per month

Bedroom	Private (10m2)
Bathroom	Shared with 11 or 13 (mixed gender) students
Kitchen	Shared with 11 or 13 (mixed gender) students
Living room	Shared with 11 or 13 (mixed gender) students
Washing/Drying	In common area (free of charge)
Parking	Paid



[Click for video tour!](#)



[View on Google Maps](#)






UILENSTEDE 174 - 222

Rental Price

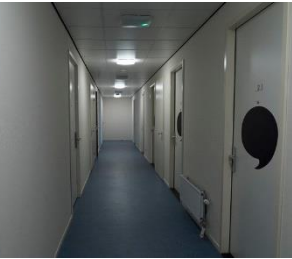
€440,92 - €492,03 per month

Bedroom	Private, connected to balcony (12,8 m2)
Bathroom	Private
Kitchen	Shared with 13 (mixed gender) students
Washing/Drying	In common area (free of charge)
Parking	Paid

 [Click for video tour!](#)

 [View on Google Maps](#)





DE BOELELAAN GRONINGEN STRAAT

Rental Price

€469,47 - €598,93 per month

Bedroom

Private
(13,4 m² – 21,2 m²)

Bathroom

Shared with 5 or 7 (mixed
gender) students

Kitchen

Shared with 5 or 7 (mixed
gender) students

Washing/Drying

In common kitchen
(free of charge)

Parking

Paid



[View on Google Maps](#)



EERSTE RINGDIJK STRAAT

Rental Price

€841,83 per month

Bedroom Private (25,3 m2– 29,2 m2)

Bathroom Private

Kitchen Private

Washing/Drying In common area (paid)

Parking Paid

 [View on Google Maps](#)

THE SOCIAL HUB

The Social Hub Amsterdam-West offers fully-serviced, state of the art accommodation just as if you were staying in a hotel. This includes a personal bike, cleaning and change of bed linen, 24 hours reception & security and use of the gym, study room, game room, library and other common areas. Optional services: Meal plan, room cleaning service, bed linen, kitchen utensils sets. [Click to read more!](#)

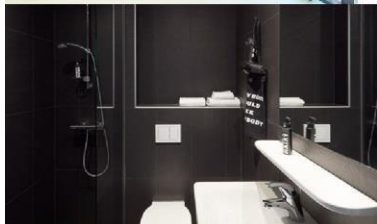
Rental Price:

€1043- € 1260 per month*

Rental Period	5 months or 10 months
Deposit	One month rent
Bedroom	Private (15 m2)
Bathroom	Private
Kitchen	Shared with 7 to 8 (mixed gender) students
Washing/Drying	Fully equipped laundry facility (pay per use)
Parking	Additional costs
Internet	High speed Wi-Fi



[View on Google Maps](#)





HOTEL JANSEN SCHINKEL

Hotel Jansen is an all-inclusive Short Stay Hotel. They provide an open house community where you can make use of the communal area (Club Room) and there is an in-house restaurant (Mama's Café). As a home-hotel hybrid, they offer the privacy of your own room when you need it and the community when you want it. Optional services: Room pack, Cleaning service, Kitchen pack, Laundromat. [Click here to read more!](#)

Rental Price: *€ 895 per month*

Administration fee	€250
Deposit	€700
Rental period	5 months / 6 months
Bedroom	Private (18 m2)
Bathroom	Private
Kitchen	shared with 26 (mixed gender) students
Washing/Drying	Fully equipped laundry facility (pay per use)
Parking	Paid
Internet	Super-fast Wifi (300 Mb/s)

[View on Google Maps](#)





HOTEL JANSEN

BAJESKWARTIER

Hotel Jansen is an all-inclusive Short Stay Hotel. They provide an open house community where you can make use of the communal area (Club Room) and there is an in-house restaurant (Mama's Café). As a home-hotel hybrid, they offer the privacy of your own room when you need it and the community when you want it. Optional services: Room pack, Cleaning service, Kitchen pack, Laundromat. [Click here to read more!](#)

Rental Price: **€1145 per month**

Administration fee	€250
Deposit	€700
Rental period	5 months / 6 months
Bedroom	Private (20 m2)
Bathroom	Private
Kitchen	shared with 26 (mixed gender) students
Washing/Drying	Fully equipped laundry facility (pay per use)
Parking	Paid
Internet	Super-fast Wifi (300 Mb/s)

[View on Google Maps](#)

