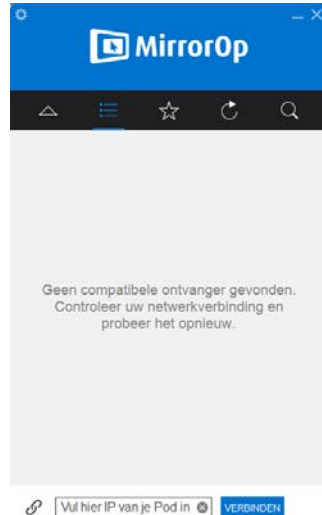
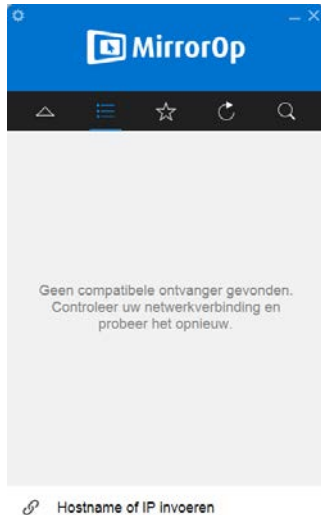


# Wireless connect your device to collaborate

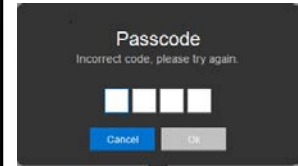
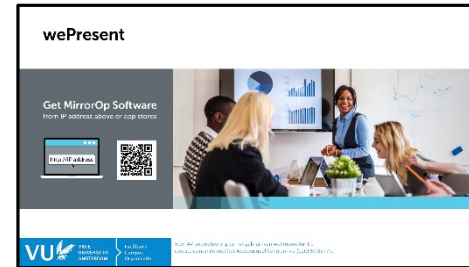
## How to connect to the display.

Make sure you are connected to the Eduroam Wi-Fi network and have MirrorOp installed. You can download the MirrorOp App via <https://www.barco.com/en/product/mirrorop>

1. Start the MirrorOp
2. In the lower screen box "Hostname of IP invoeren" type the IP address with dots of the display you want to connect to.
3. Press "connect".



4. Fill in the passcode which is displayed on the display and press "OK".



5. You're connected to the pod screen.
6. Press the play button to present.